

02 / 2013

The new N/PE Quick-terminals For any type of distribution systems

The new N/PE Quick-terminals

Standardised, future-oriented and flexible

The new N/PE Quick-terminals from STRIEBEL & JOHN are designed for the things to come. Conforming to the current standard DIN VDE 0100 Part 410 and extremely flexible in terms of expandability, these N/PE Quick-terminals are unmatched for safe, efficient and future-oriented conductor connections.

The new technology is suitable for the consumer units from the UK500 and A300 series, for all compact distribution boards, as well as for all meter cabinets, wall-mounting cabinets and floor-standing cabinets.

Product benefits

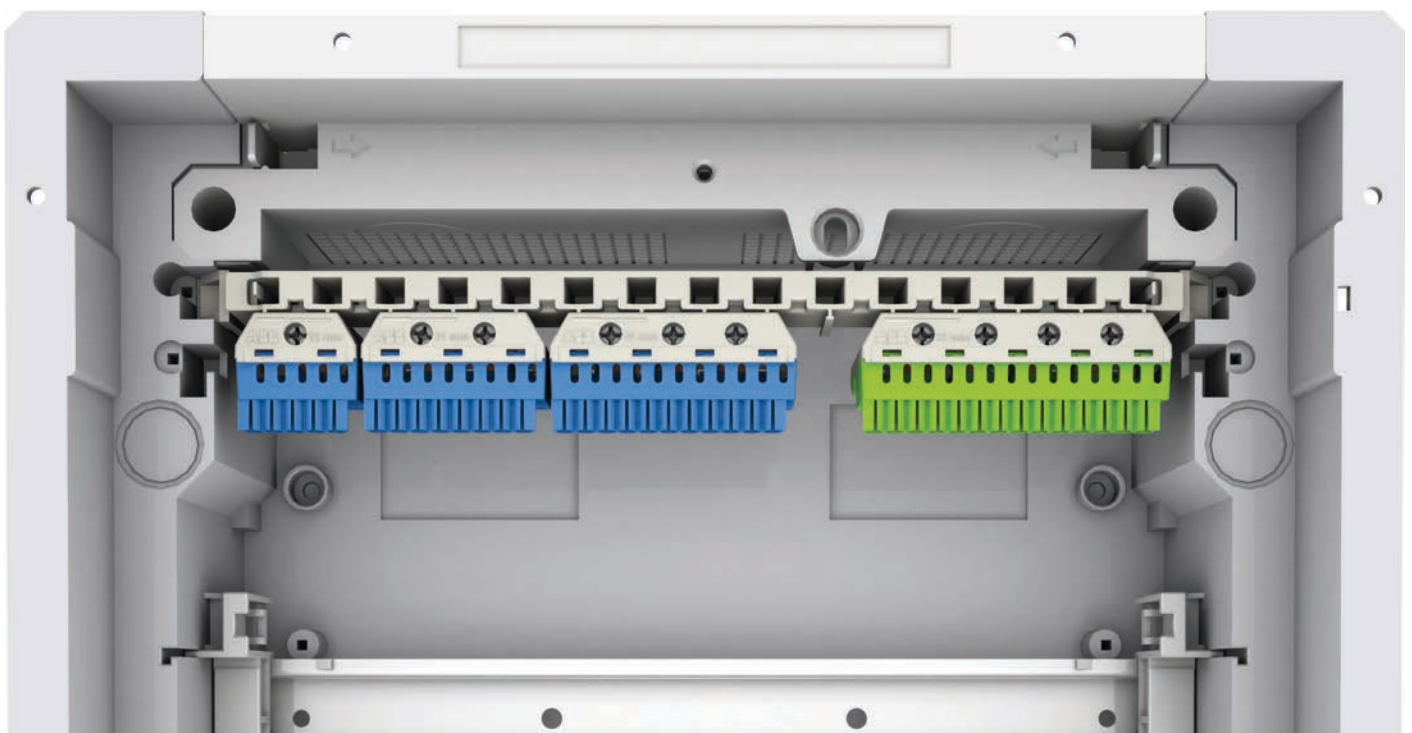
- Compliance with DIN VDE 0100 Part 410 (protection against electric shock)
- Flexible terminal system for several N power circuits:
Screw connections: 2.5 to 25 mm²; spring terminals: 1.5 to 4 mm².
- Optimal when using several residual current circuit breaker (RCDs)
- Combination of several Quick-terminals on one common quick carrier

As an electrician you no longer have to compromise.

The new N/PE Quick-terminals from STRIEBEL & JOHN can simplify your work: Just choose the right terminal blocks and plug them in! The resulting installation is tidy and flexible. The colour coding ensures that you will find your way even with expansions.

It goes without saying that these products are of the same high quality you have come to expect from STRIEBEL & JOHN.

- Ease of expansion using connecting bridges
- Precise assignment of the terminal blocks (clear colour coding: N = blue, PE = yellow-green)
- Easy labelling of the terminals (DIN VDE 0603 Part 1) using pre-printed, self-adhesive number strips
- Wide range of applications:
can be used in the UK500 and A300 consumer unit series, in all compact distribution boards, and with all meter cabinets, wall-mounting and floor-standing cabinets
- The new terminal system replaces the N/PE Quick-busbars that were previously in use



Consumer units UK500 series

Clean and tidy work

Anyone would like their distribution board so tidy: all Quick-terminals are mounted next to each other on one carrier with standardised colour coding.

Configure based on your needs

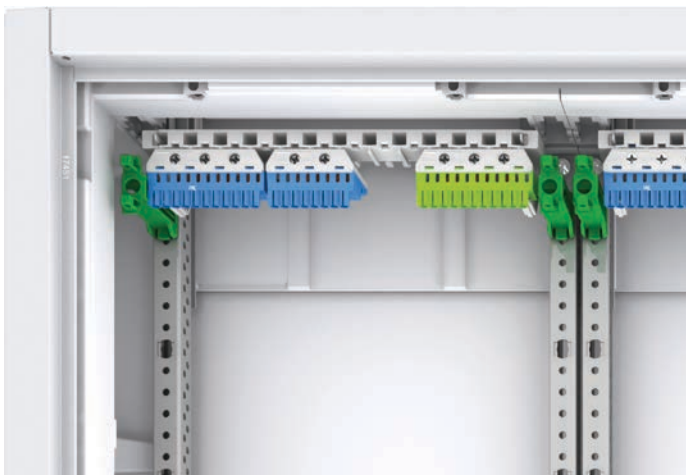
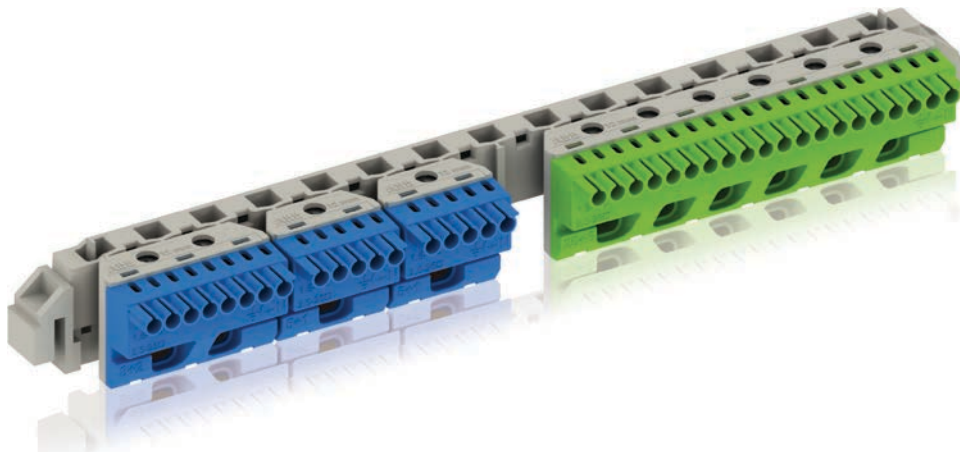
The modularity of the new series and the extensive range of products allow customising the new products to the needs based on real-world use. Various Quick-terminals can be combined on one quick carrier as necessary.

Flexible by design

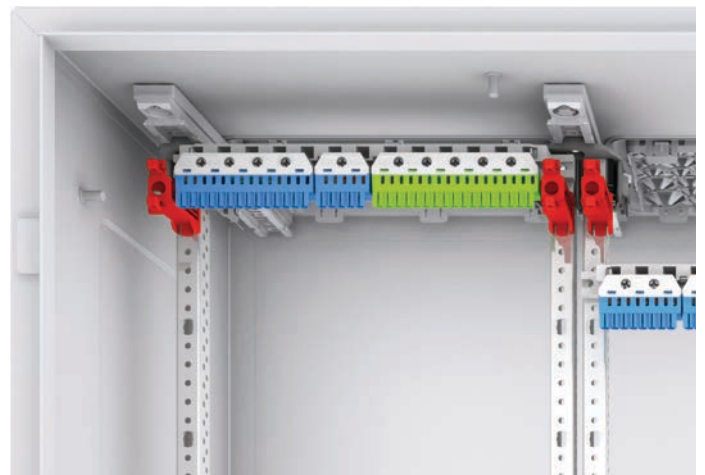
You need a larger N terminal?

No problem. You can connect individual Quick-terminals with connecting bridges and remain in compliance with the technical requirements of IEC 60364-4-41 and DIN VDE 0100 Part 410 in an economic way.

The high flexibility of the new series is a crucial advantage here and in other solutions. The ability to combine terminal blocks with different numbers of terminals offers numerous possibilities.



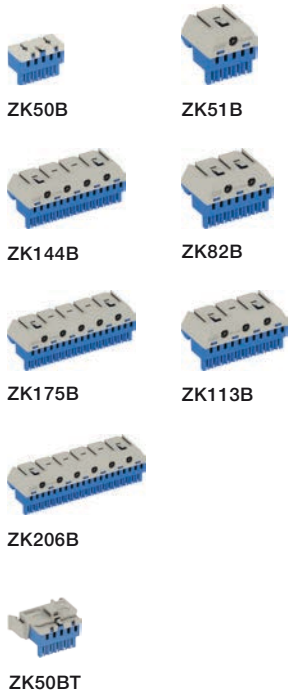
Compact distribution boards AT series



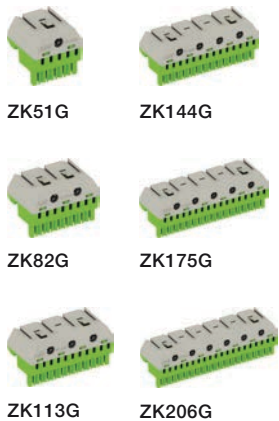
Wall-mounting cabinets TwinLine-W series

The new N/PE Quick-terminals

The complete series for all quick-carriers



Type	Connection cross section	
	Screw connection	Spring terminals
N Quick-terminals		
ZK50B	0 x 25 mm ²	5 x 1,5 - 4 mm ²
ZK51B	1 x 25 mm ²	5 x 1,5 - 4 mm ²
ZK82B	2 x 25 mm ²	8 x 1,5 - 4 mm ²
ZK113B	3 x 25 mm ²	11 x 1,5 - 4 mm ²
ZK144B	4 x 25 mm ²	14 x 1,5 - 4 mm ²
ZK175B	5 x 25 mm ²	17 x 1,5 - 4 mm ²
ZK206B	6 x 25 mm ²	20 x 1,5 - 4 mm ²
N Quick-terminal with Adapter		
ZK50BT	0 x 25 mm ²	5 x 1,5 - 4 mm ²



PE Quick-terminals		
ZK51G	1 x 25 mm ²	5 x 1,5 - 4 mm ²
ZK82G	2 x 25 mm ²	8 x 1,5 - 4 mm ²
ZK113G	3 x 25 mm ²	11 x 1,5 - 4 mm ²
ZK144G	4 x 25 mm ²	14 x 1,5 - 4 mm ²
ZK175G	5 x 25 mm ²	17 x 1,5 - 4 mm ²
ZK206G	6 x 25 mm ²	20 x 1,5 - 4 mm ²



ZK10P10



ZK15



ZK11



ZK12



ZK13



ZK14

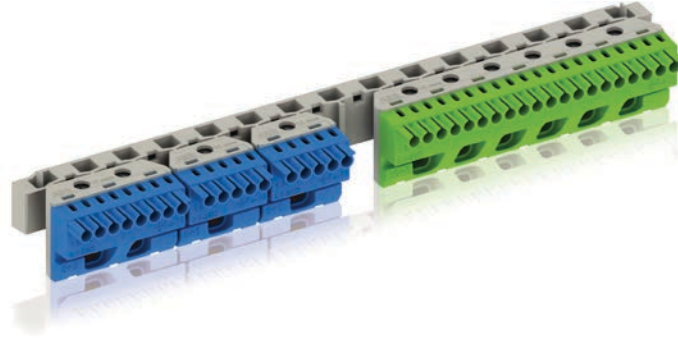


ZK16

Type	Description
Connecting bridges	
ZK10P10	For Quick-terminals
Adapter for ZK50B	
ZK15	Engaging the ZK50B N Quick-terminal in the adapter ZK15, leads to ZK50BT to be laterally fastened UK5... , A3... or to the DIN rail
Quick-carriers	
ZK11	For consumer units UK5...
ZK12	For consumer units A3...
ZK13	For compact distribution boards AT/U
ZK14	For distribution panels
ZK16	For meter panels

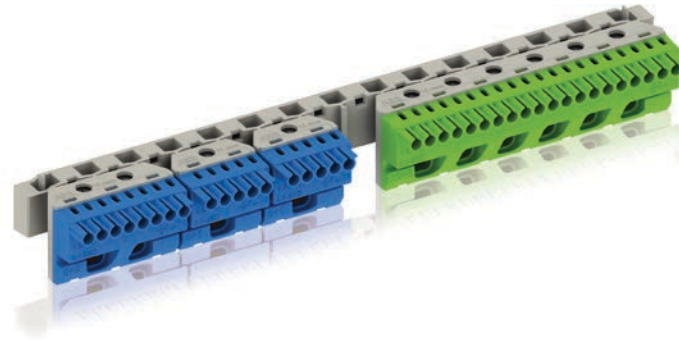
The new N/PE Quick-terminals

For consumer units and compact distribution boards



The new N/PE Quick-terminals

For meter cabinets, wall-mounting and floor-standing cabinets



3 device rows and more:
N/PE Quick-terminals
included in the scope
of delivery for meter panels

Distribution panels
1V10 up to 1V50:
N/PE Quick-terminals
included in the scope of
delivery

N/PE Quick-terminals
order separately

N/PE Quick-terminals
order separately



U, A, FS series ☐
meter cabinets



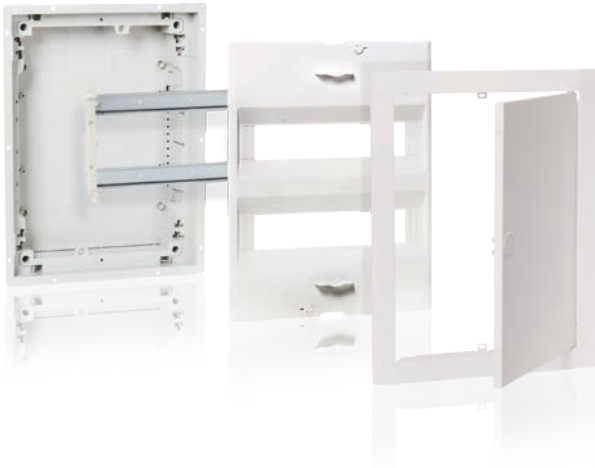
Wall-mounting cabinets:
U, A, FS, WS ☐
B, G, C, and W ⊥
TwinLine-G, -L, -W ☐ ⊥



Floor-standing cabinets:
HS, FS, WS ☐
H, G, C and W ⊥
TwinLine-G, -L, -W ☐ ⊥

The new N/PE Quick-terminals

Complete version UK500N with trim frame and doors



Flush-mounted consumer units – UK500N, IP30

I_n up to 63 A

Consumer unit DIN VDE 0603-1, DIN 43871

Available in 1 up to 4 row versions as flush-mounted consumer units

Upgradeable for hollow-wall mounting using UZ90P4

Wall box:

- Non-warp, break-proof, non-flammable, low-halogen plastic
- With cable strain relief comb
- With detachable cable inlets

Wall grips

Removable device support

With the new N/PE Quick-terminals

Cover with 90° quick-action screws, lead-sealable

45 mm slots for 12 devices, expandable to 14

Labelling system

Trim frame and sheet steel door, adjustable for uneven surface

Colour: White, RAL 9016

* In connection with UZ90P4



2CPX031281R9999

UK512N2



2CPX031282R9999

UK524N3



2CPX031283R9999

UK536N3



2CPX031284R9999

UK548N3

Article	H x W x D in mm	SU	Type	Ord. no.	Price
Flush-mounted consumer units, 1-row					
Niche dimensions	335 x 350 x 95	12 (13)	UK512N2	2CPX031281R9999	
Wall cut out dimensions for hollow-wall mounting	308 x 327 x 88				
Flush-mounted consumer units, 2-row					
Niche dimensions	460 x 350 x 95	24 (28)	UK524N3	2CPX031282R9999	
Wall cut out dimensions for hollow-wall mounting	433 x 327 x 88				
Flush-mounted consumer units, 3-row					
Niche dimensions	585 x 350 x 95	36 (41)	UK536N3	2CPX031283R9999	
Wall cut out dimensions for hollow-wall mounting	558 x 327 x 88				
Flush-mounted consumer units, 4-row					
Niche dimensions	710 x 350 x 95	48 (56)	UK548N3	2CPX031284R9999	
Wall cut out dimensions for hollow-wall mounting	683 x 327 x 88				

The new N/PE Quick-terminals

Accessories / Equipment in the UK500N



ZK113B



ZK50BT



ZK113G



ZK10P10



ZK11



ZK15

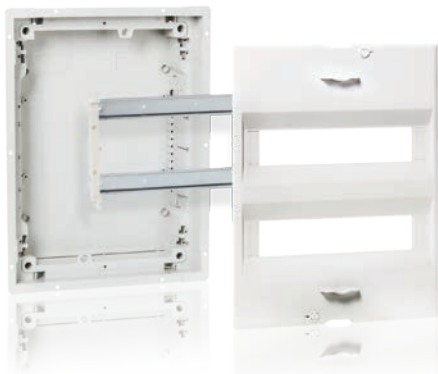
Article	Number of terminals 1.5 - 4 mm ²	Number of terminals 2.5 - 25 mm ²	External dimensions H x W x D in mm	Pcs.	Type	Ord. no.	Price
N Quick-terminals	5	0	23 x 32 x 21	1	ZK50B	2CPX062750R9999	
For quick carriers	5	1	32 x 32 x 31	1	ZK51B	2CPX062751R9999	
	8	2	32 x 49 x 31	1	ZK82B	2CPX062752R9999	
	11	3	32 x 65 x 31	1	ZK113B	2CPX062753R9999	
	14	4	32 x 82 x 31	1	ZK144B	2CPX062754R9999	
	17	5	32 x 98 x 31	1	ZK175B	2CPX062755R9999	
	20	6	32 x 115 x 31	1	ZK206B	2CPX062756R9999	
N Quick-terminal with adapter ZK15	5	0	28 x 39 x 25	1	ZK50BT	2CPX062745R9999	
For lateral assembly to the UK5... , A3... or for fastening to the DIN rail							
PE Quick-terminals	5	1	32 x 32 x 31	1	ZK51G	2CPX062757R9999	
For quick carriers	8	2	32 x 49 x 31	1	ZK82G	2CPX062758R9999	
	11	3	32 x 65 x 31	1	ZK113G	2CPX062759R9999	
	14	4	32 x 82 x 31	1	ZK144G	2CPX062760R9999	
	17	5	32 x 98 x 31	1	ZK175G	2CPX062761R9999	
	20	6	32 x 115 x 31	1	ZK206G	2CPX062762R9999	
Connecting bridges				10	ZK10P10	2CPX062763R9999	
For Quick-terminals							
Quick carriers				1	ZK11	2CPX064980R9999	
For consumer units UK5... Usable width for Quick-terminals 247 mm							
Adapter for ZK50B				1	ZK15	2CPX064984R9999	
Engaging the ZK50B N Quick-terminal in the adapter ZK15, leads to ZK50BT to be laterally fastened UK5... , A3... or to the DIN rail							

Article	Type	Equipment with new N/PE Quick-terminals*			
		UK512N2	UK524N3	UK536N3	UK548N3
Quick carrier for UK500N	ZK11	1 pc.	1 pc.	1 pc.	1 pc.
Adapter for ZK50B	ZK15			1 pc.	1 pc.
N Quick-terminal	ZK50B		1 pc.	1 pc.	1 pc.
	ZK51B	1 pc.			
	ZK82B	1 pc.	2 pcs.		1 pc.
	ZK113B			2 pcs.	
	ZK144B				1 pc.
PE Quick-terminal	ZK113G	1 pc.			
	ZK144G		1 pc.		
	ZK175G			1 pc.	
	ZK206G				1 pc.

* Included in the scope of delivery

The new N/PE Quick-terminals

Basic version UK500BN without trim frame and doors



Flush-mounted consumer units – UK500BN, IP30

I_n up to 63 A

Consumer unit DIN VDE 0603-1, DIN 43871

Available in 1 up to 4 row versions as flush-mounted consumer units

Upgradeable for hollow-wall mounting using UZ90P4

Wall box:

- Non-warp, break-proof, non-flammable, low-halogen plastic
- With cable strain relief comb
- With detachable cable inlets

Wall grips

Removable device support

With the new N/PE Quick-terminals

Cover with 90° quick-action screws, lead-sealable

45 mm slots for 12 devices, expandable to 14

Labelling system

* In connection with UZ90P4



2CPX031285R9999

UK510BN



2CPX031286R9999

UK520BN



2CPX031287R9999

UK530BN



2CPX031288R9999

UK540BN

Article	H x W x D in mm	SU	Type	Ord. no.	Price
Flush-mounted consumer units, 1-row					
Niche dimensions	335 x 350 x 95	12 (14*)	UK512BN2	2CPX031285R9999	
Wall cut out dimensions for hollow-wall mounting	308 x 327 x 88				
Flush-mounted consumer units, 2-row					
Niche dimensions	460 x 350 x 95	24 (28)	UK524BN3	2CPX031286R9999	
Wall cut out dimensions for hollow-wall mounting	433 x 327 x 88				
Flush-mounted consumer units, 3-row					
Niche dimensions	585 x 350 x 95	36 (42*)	UK536BN3	2CPX031287R9999	
Wall cut out dimensions for hollow-wall mounting	558 x 327 x 88				
Flush-mounted consumer units, 4-row					
Niche dimensions	710 x 350 x 95	48 (56)	UK548BN3	2CPX031288R9999	
Wall cut out dimensions for hollow-wall mounting	683 x 327 x 88				

* In connection with a standard door, "vision line" or "color line" with TIP-in closure there will be one space unit less.

The new N/PE Quick-terminals

Accessories / Equipment with UK500BN



ZK113B



ZK50BT



ZK113G



ZK10P10



ZK11



ZK15

Article	Number of terminals 1.5 - 4 mm ²	Number of terminals 2.5 - 25 mm ²	External dimensions H x W x D in mm	Pcs.	Type	Ord. no.	Price
N Quick-terminals	5	0	23 x 32 x 21	1	ZK50B	2CPX062750R9999	
For quick carriers	5	1	32 x 32 x 31	1	ZK51B	2CPX062751R9999	
	8	2	32 x 49 x 31	1	ZK82B	2CPX062752R9999	
	11	3	32 x 65 x 31	1	ZK113B	2CPX062753R9999	
	14	4	32 x 82 x 31	1	ZK144B	2CPX062754R9999	
	17	5	32 x 98 x 31	1	ZK175B	2CPX062755R9999	
	20	6	32 x 115 x 31	1	ZK206B	2CPX062756R9999	
N Quick-terminal with adapter ZK15	5	0	28 x 39 x 25	1	ZK50BT	2CPX062745R9999	
For lateral assembly to the UK5... , A3... or for fastening to the DIN rail							
PE Quick-terminals	5	1	32 x 32 x 31	1	ZK51G	2CPX062757R9999	
For quick carriers	8	2	32 x 49 x 31	1	ZK82G	2CPX062758R9999	
	11	3	32 x 65 x 31	1	ZK113G	2CPX062759R9999	
	14	4	32 x 82 x 31	1	ZK144G	2CPX062760R9999	
	17	5	32 x 98 x 31	1	ZK175G	2CPX062761R9999	
	20	6	32 x 115 x 31	1	ZK206G	2CPX062762R9999	
Connecting bridges				10	ZK10P10	2CPX062763R9999	
For Quick-terminals							
Quick carriers for consumer units UK5... Usable width for Quick-terminals 247 mm				1	ZK11	2CPX064980R9999	
Adapter for ZK50B Engaging the ZK50B N Quick-terminal in the adapter ZK15, leads to ZK50BT to be laterally fastened UK5... , A3... or to the DIN rail				1	ZK15	2CPX064984R9999	

Article	Type	Equipment with new N/PE Quick-terminals*			
		UK512BN2	UK524BN3	UK536BN3	UK548BN3
Quick carrier for UK500BN	ZK11	1 pc.	1 pc.	1 pc.	1 pc.
Adapter for ZK50B	ZK15			1 pc.	1 pc.
N Quick-terminal	ZK50B		1 pc.	1 pc.	1 pc.
	ZK51B	1 pc.			
	ZK82B	1 pc.	2 pcs.		1 pc.
	ZK113B			2 pcs.	
	ZK144B				1 pc.
PE Quick-terminal	ZK113G	1 pc.			
	ZK144G		1 pc.		
	ZK175G			1 pc.	
	ZK206G				1 pc.

*Included in the scope of delivery

The new N/PE Quick-terminals

Hood-type consumer unit A300N without doors



Surface-mounted hood-type consumer unit – A300N, IP30

VDE 0603-1

DIN 43871

Removable device support

With the new N/PE Quick-terminals

Colour RAL 9016, common white

Without door



A312N2



A324N3



A336N3



A348N3

Article	H x W x D in mm	SU	Type	Ord. no.	Price
Surface-mounted hood-type consumer unit– A300N, IP30  					
1-row	245 x 295 x 110	12 / 13*	A312N2	2CPX031291R9999	
2-row	385 x 295 x 110	24 / 26*	A324N3	2CPX031292R9999	
3-row	510 x 295 x 110	36 (39*)	A336N3	2CPX031293R9999	
4-row	635 x 295 x 110	48 / 52*	A348N3	2CPX031294R9999	

*With sheet steel or a transparent doors, there will be one space unit less as reserve.



A362

Article	Pcs.	Type	Ord. no.	Price
Transparent door, without trim frame to be used with:				
Hood-type consumer unit, 1-row, A312N2	1	A360	2CPX031635R9999	
Hood-type consumer unit, 2-row, A324N3	1	A361	2CPX031636R9999	
Hood-type consumer unit, 3-row, A336N3	1	A362	2CPX031637R9999	
Hood-type consumer unit, 4-row, A348N3	1	A363	2CPX031638R9999	
Sheet steel door, without trim frame to be used with:				
Hood-type consumer unit, 1-row, A312N2	1	A368	2CPX031631R9999	
Hood-type consumer unit, 2-row, A324N3	1	A369	2CPX031632R9999	
Hood-type consumer unit, 3-row, A336N3	1	A370	2CPX031633R9999	
Hood-type consumer unit, 4-row, A348N3	1	A371	2CPX031634R9999	

The new N/PE Quick-terminals

Accessories / Equipment with the A300N



ZK113B



ZK50BT



ZK113G



ZK10P10



ZK12



ZK15

Article	Number of terminals 1.5 - 4 mm ²	Number of terminals 2.5 - 25 mm ²	External dimensions H x W x D in mm	Pcs.	Type	Ord. no.	Price
N Quick-terminals	5	0	23 x 32 x 21	1	ZK50B	2CPX062750R9999	
For quick carriers	5	1	32 x 32 x 31	1	ZK51B	2CPX062751R9999	
	8	2	32 x 49 x 31	1	ZK82B	2CPX062752R9999	
	11	3	32 x 65 x 31	1	ZK113B	2CPX062753R9999	
	14	4	32 x 82 x 31	1	ZK144B	2CPX062754R9999	
	17	5	32 x 98 x 31	1	ZK175B	2CPX062755R9999	
	20	6	32 x 115 x 31	1	ZK206B	2CPX062756R9999	
N Quick-terminal with adapter ZK15	5	0	28 x 39 x 25	1	ZK50BT	2CPX062745R9999	
For lateral assembly to the UK5... , A3... or for fastening to the DIN rail							
PE Quick-terminals	5	1	32 x 32 x 31	1	ZK51G	2CPX062757R9999	
For quick carriers	8	2	32 x 49 x 31	1	ZK82G	2CPX062758R9999	
	11	3	32 x 65 x 31	1	ZK113G	2CPX062759R9999	
	14	4	32 x 82 x 31	1	ZK144G	2CPX062760R9999	
	17	5	32 x 98 x 31	1	ZK175G	2CPX062761R9999	
	20	6	32 x 115 x 31	1	ZK206G	2CPX062762R9999	
Connecting bridges				10	ZK10P10	2CPX062763R9999	
For Quick-terminals							
Quick-carriers				1	ZK12	2CPX064981R9999	
For consumer units UK5... Usable width for Quick terminals 214 mm							
Adapter for ZK50B				1	ZK15	2CPX064984R9999	
Engaging the ZK50B N Quick-terminal in the adapter ZK15, leads to ZK50BT to be laterally fastened UK5... , A3... or to the DIN rail							

Article	Type	Equipment with new N/PE Quick-terminals*			
		A312N2	A324N3	A336N3	A348N3
Quick carriers	ZK12	1 pc.	1 pc.	2 pc.	2 pcs.
N Quick-terminal	ZK50B		1 pc.	1 pc.	1 pc.
	ZK51B	1 pc.			
	ZK82B	1 pc.	2 pcs.		1 pc.
	ZK113B			2 pcs.	
	ZK144B				1 pc.
PE Quick-terminal	ZK113G	1 pc.			
	ZK144G		1 pc.		
	ZK175G			1 pc.	
	ZK206G				1 pc.

*Included in the scope of delivery

The new N/PE Quick-terminals

Compact distribution boards / Meter and distribution panels



Compact distribution boards, IP43 (AT), IP31(U)

I_n up to 125 A

DIN EN 60439-1 (VDE 0660-500)

The installed distribution board panels can be removed for equipping and wiring

125 mm or 150 mm DIN rail spacing

Enclosures and doors made of sheet steel, 1 mm

Colour: white, RAL 9016

3 or more panels wide: Double-wing doors

With new N/PE Quick-terminals for panels for rail mounting devices

Without N/PE Quick-terminals for panels with wiring space or mounting plates

With cable strain relief

With one membrane flange per panel width on top (AT)

With labelling system

Trim frame adjusted for uneven surfaces (U)

* In connection with earthing set

*1 In connection with a hollow-wall set



Distribution panels

DIN VDE 603, DIN 43870, DIN 43880

Built on EDF mounting frame

With new N/PE Quick-terminals for panels 1V10 up to 1V50

Meter panels

DIN VDE 603, DIN 43870, DIN 43880

Built on EDF mounting frame

With new N/PE Quick-terminals for panels with 3 device rows and more

The new N/PE Quick-terminals

Accessories / Equipment with the AT/U, meter and distribution panels



ZK113B



ZK50BT



ZK113G



ZK10P10



ZK13



ZK14



ZK16



ZK15

Article	Number of Terminals 1.5 - 4 mm ²	Number of terminals 2.5 - 25 mm ²	External dimensions H x W x D in mm	Pcs.	Type	Ord. no.	Price
N Quick-terminals	5	0	23 x 32 x 21	1	ZK50B	2CPX062750R9999	
For quick carriers	5	1	32 x 32 x 31	1	ZK51B	2CPX062751R9999	
	8	2	32 x 49 x 31	1	ZK82B	2CPX062752R9999	
	11	3	32 x 65 x 31	1	ZK113B	2CPX062753R9999	
	14	4	32 x 82 x 31	1	ZK144B	2CPX062754R9999	
	17	5	32 x 98 x 31	1	ZK175B	2CPX062755R9999	
	20	6	32 x 115 x 31	1	ZK206B	2CPX062756R9999	
N Quick-terminals with adapter ZK15	5	0	28 x 39 x 25	1	ZK50BT	2CPX062745R9999	
For fastening to DIN rail							
PE Quick-terminals	5	1	32 x 32 x 31	1	ZK51G	2CPX062757R9999	
For quick carriers	8	2	32 x 49 x 31	1	ZK82G	2CPX062758R9999	
	11	3	32 x 65 x 31	1	ZK113G	2CPX062759R9999	
	14	4	32 x 82 x 31	1	ZK144G	2CPX062760R9999	
	17	5	32 x 98 x 31	1	ZK175G	2CPX062761R9999	
	20	6	32 x 115 x 31	1	ZK206G	2CPX062762R9999	
Connecting bridges				10	ZK10P10	2CPX062763R9999	
For Quick-terminals							
Quick-carrier				1	ZK13	2CPX064982R9999	
For compact distribution boards AT/U							
Usable width for Quick-terminals 214 mm							
Quick-carrier				1	ZK14	2CPX064983R9999	
For distribution panels							
Usable width for Quick-terminals 214 mm							
Quick-carrier				1	ZK16	2CPX064985R9999	
For meter panels							
Usable width for Quick-terminals 214 mm							
Adapter for ZK50B				1	ZK15	2CPX064984R9999	
Engaging the ZK50B N Quick-terminal in the adapter ZK15, leads to ZK50BT to be fastened to the DIN rail							

Article	Type	Equipment with new N/PE Quick-terminals		
		Compact distribution boards*	Distribution panels* ¹	Meter panels* ²
N/PE Quick-carrier	ZK13	1 pc.		
	ZK14		1 pc.	
	ZK16			1 pc.
N Quick-terminals	ZK82B	1 pc.	1 pc.	1 pc.
	ZK113B	1 pc.	1 pc.	1 pc.
PE Quick-terminals	ZK175G	1 pc.	1 pc.	1 pc.

* In the scope of delivery for rail mounting device distribution panels

*¹ In the scope of delivery for distribution panels 1V10 up to 1V50

*² In the scope of delivery for meter panels with 3 device rows and more

Contact

STRIEBEL & JOHN GmbH & Co. KG

Am Fuchsgraben 2 - 3

77880 Sasbach, Germany

Phone: +49 7841 609 0

Fax: +49 7841 609 545

E-Mail: info.desuj@de.abb.com

www.striebelundjohn.com

We reserve the right to make technical changes or modify the contents of this document without prior notice. With regard to purchase orders, the agreed particulars shall prevail. STRIEBEL & JOHN does not accept any responsibility whatsoever for potential errors or possible lack of information in this document.

We reserve all rights in this document and in the subject matter and illustrations contained therein. Any reproduction, disclosure to third parties or utilization of its contents - in whole or in parts - is forbidden without prior written consent of STRIEBEL & JOHN.

Copyright © 2013 STRIEBEL & JOHN
All rights reserved

K-0161-PDF-02/2013-V1 - 2CPC 000 161 B0201